

UNI ASIA HEAVY EQUIPMENT

Amphibious Excavator & Heavy Attachments



www.uniasia.co

www.uniasigroup.com.my

ABOUT US

For more than 10 years UNI ASIA has been providing world-class attachment solutions that enhance performance and safety on the job site. Our attachment solutions are specific to your needs and are designed to fit together and work together; guaranteeing you maximum machine efficiency and the lowest delivered cost. Our team of equipment professionals has extensive experience over a wide array of applications and can provide the correct attachment solution for your needs. Top-notch customer support backs all products and services assuring a happy outcome when you deal with UNI ASIA.

We are easy to do business with. Take care of all of your construction attachment needs with the best solution provider in the industry, UNI ASIA.

UNI ASIA Products cover a wide array of machine attachments, from general material handling to highly specialized, industry-specific solutions.

- Amphibious Excavator and Attachments.
- Long Reach and Material handling arm.
- Heavy Duty Bucket and Attachments
- Heavy Duty Grapple and Attachments
- Dredging Pumps and Attachments.



www.uniasia.co

www.uniasigroup.com.my

Long Reach & Material Handler

| Excavator Class/ Operating Weight | Length | | A Max. Reach | | B Max. Digging Depth | | C Max. Height | | D Boom. Height | | Approximate Bucket Capacity | |
|--------------------------------------|--------|---------|-----------------|---------|-------------------------|---------|------------------|---------|-------------------|--------|--------------------------------|-------------------|
| | m | Ft | m | Ft | m | Ft | m | Ft | m | Ft | m ³ | Yard ³ |
| 12-14 ton (26,400-30,800 lb) | 12.00 | 39' 4" | 12.00 | 39' 4" | 8.30 | 27' 2" | 10.50 | 34' 5" | 2.10 | 6' 11" | 0.40 | 0.52 |
| 15-16 ton (33,000-35,200 lb) | 14.00 | 45' 11" | 14.00 | 45' 11" | 10.70 | 35' 0" | 11.80 | 38' 8" | 2.30 | 7' 6" | 0.40 | 0.52 |
| 20-22 ton (44,000-48,400 lb) | 15.50 | 50' 10" | 15.50 | 50' 10" | 11.46 | 37' 7" | 13.78 | 45' 3" | 2.50 | 8' 3" | 0.50 | 0.65 |
| 23-27 ton (50,600-55,000 lb) | 17.00 | 56' 9" | 17.00 | 56' 9" | 12.80 | 41' 11" | 14.95 | 49' 0" | 2.70 | 8' 11" | 0.50 | 0.65 |
| 28-30 ton (61,600-66,000 lb) | 18.00 | 59' 0" | 18.00 | 59' 0" | 13.80 | 45' 1" | 15.20 | 49' 10" | 3.10 | 10' 2" | 0.60 | 0.78 |
| 33-35 ton (72,600-77,000 lb) | 18.50 | 60' 5" | 18.50 | 60' 5" | 14.50 | 47' 6" | 15.10 | 49' 6" | 3.40 | 11' 0" | 0.70 | 0.91 |
| 40-45 ton (88,000-99,000 lb) | 21.00 | 68' 10" | 21.00 | 68' 10" | 15.30 | 50' 2" | 15.58 | 49' 3" | 3.70 | 12' 2" | 0.80 | 1.04 |
| 50-55 ton (110,000-121,000 lb) | 22.00 | 72' 2" | 22.00 | 72' 2" | 16.25 | 53' 4" | 15.92 | 52' 3" | 3.70 | 12' 2" | 0.70 | 0.91 |
| 60-65 ton (132,000-143,000 lb) | 23.00 | 75' 5" | 23.00 | 75' 5" | 17.50 | 57' 4" | 17.50 | 57' 5" | 4.10 | 13' 6" | 1.20 | 1.56 |
| 70-75 ton (154,000-165,000 lb) | 24.00 | 78' 8" | 24.00 | 78' 8" | 18.10 | 59' 3" | 19.00 | 62' 4" | 4.60 | 15' 1" | 1.30 | 1.69 |
| 80-85 ton (176,000-187,000 lb) | 25.00 | 82' | 25.00 | 82' 0" | 18.60 | 61' 00" | 19.20 | 62' 11" | 4.70 | 15' 5" | 1.40 | 1.82 |
| 100-110 ton (220,000-242,000lb) | 27.00 | 88' | 27.00 | 88' 7" | 20.00 | 65' 7" | 19.00 | 62' 4" | 5.00 | 16' 5" | 1.60 | 2.08 |
| | 28.00 | 92' | 28.00 | 92' 9" | 21.00 | 68' 10" | 20.00 | 65' 7" | 5.00 | 16' 5" | 1.40 | 1.82 |

UNI ASIA Long Reach are designed for extended reach, light digging operations. Typical applications include ditch, canal and river maintenance; cleaning out industrial waste pits and settling ponds; dredging silt from waterways and maintaining slopes along roads and highways.



CAT390DL



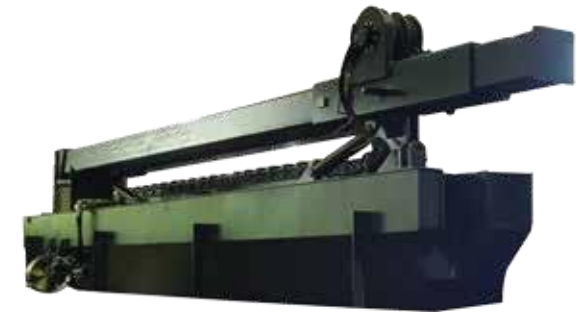
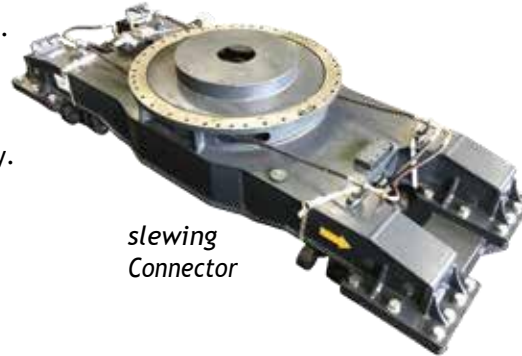
VOLVO EC210

Amphibious Excavator

An Amphibious Excavator is specially designed to work in swampy, wet land and shallow water. Our well designed Amphibious Undercarriages provides great mobility to work on soft terrains and swampy area. Standard package of Uni Asia Amphibious Excavator is attached with long reach arm c/w conventional excavator bucket. Amphibious Undercarriage has proven to work effectively on the following areas:

- 1) Swamp land clearing at mining, plantation and construction area.
- 2) Deepening of canal, river channel and river mouth.
- 3) Building bund for flood prevention and land reclamation.
- 4) Building bund wall for fish, shrimp ponds and salt making industry.
- 5) Clearing of lakes, ponds and water reservoir.
- 6) Digging trenches for oil & gas piping installation.
- 7) Clearing obstacles at landslide and flood hit area.
- 8) Water irrigation at paddy field and plantation.

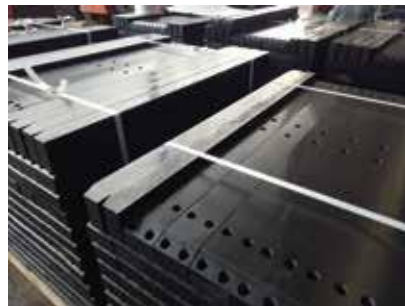
*slewing
Connector*



side Pontoon with hydraulic spuds system

Optional items:

- 1) Additional side pontoons c/w 6 meter of hydraulic spuds. These optional items are required if the water draft of the site working condition is between 2 to 3.5 meters.



LGP Truck shoe



From View



Amphibious Excavator

DIAGRAM B

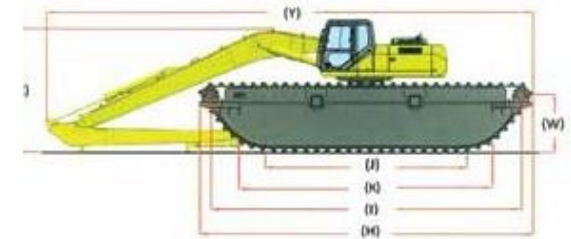
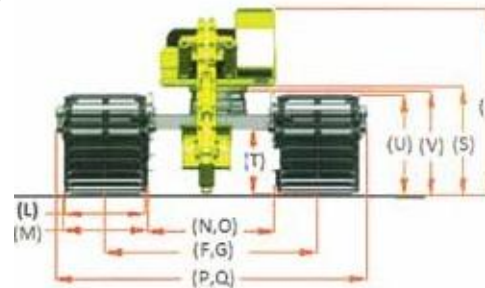
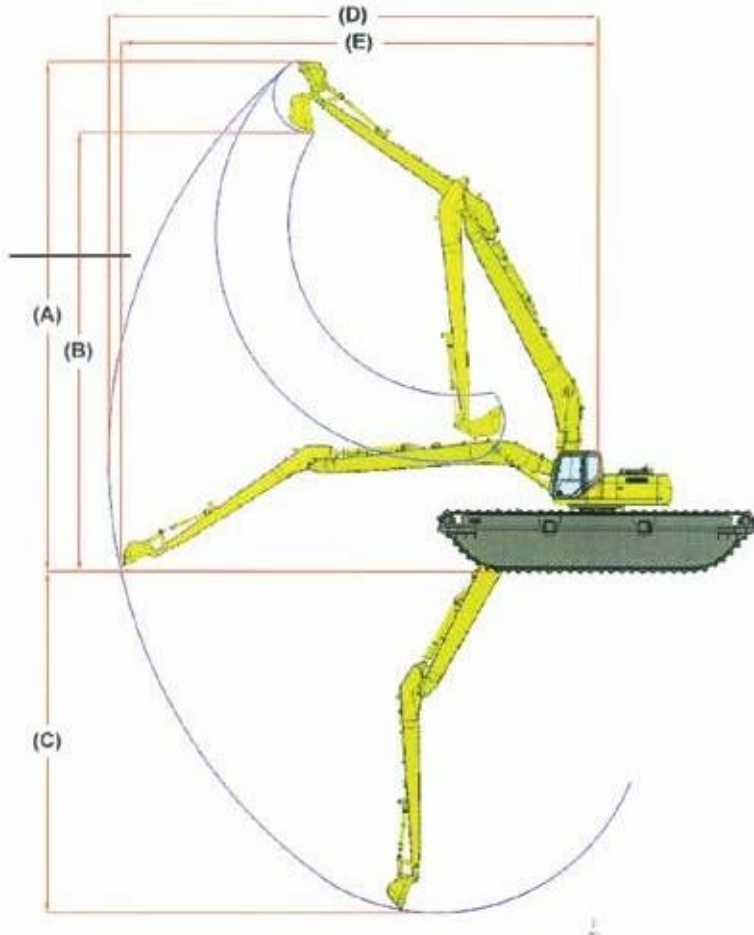


DIAGRAM A



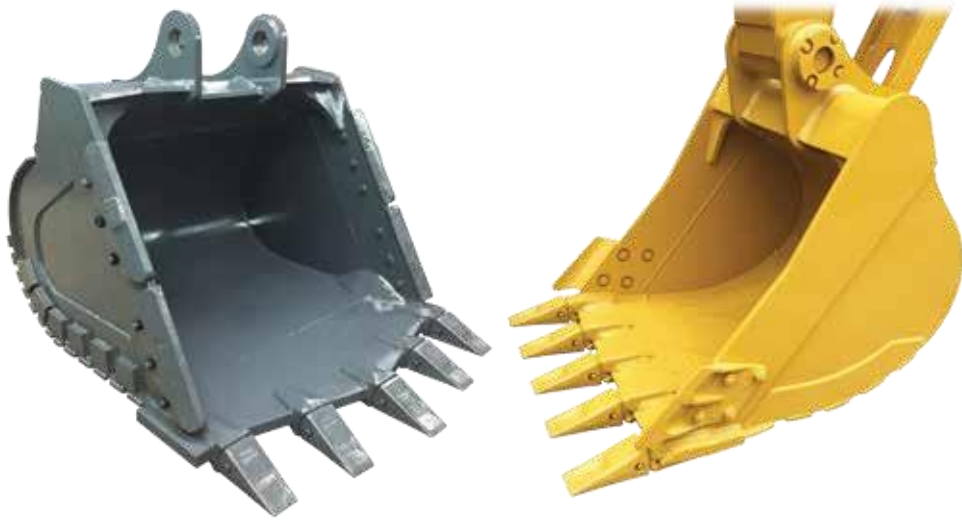
PRINCIPAL SPECIFICATIONS & DIMENSION

| Item | Description | Unit | Amphibious Undercarriage Models | | | | | |
|-----------------------|-----------------------------------|--------|--------------------------------------|--------------------------------------|---|---|---------------------------------------|---------------------------------------|
| | | | UA50ER Class 5-6 ton excavator | UA80ER Class 7-8 ton excavator | UA120ER Class 10-14 ton excavator | UA200ER Class 20-24 ton excavator | UA300 Class 28-33 ton excavator | UA400 Class 40-45 ton excavator |
| 1) | Total Weight | KG | 12500 | 14500 | 22000 | 32000 | 45000 | 48530 |
| 2) | Float Capacity | m3 | 14 | 17 | 26 | 40 | 60 | 65.6 |
| 3) | Float Capacity/Total Weight | m3/ton | 1.12 | 1.17 | 1.18 | 1.25 | 1.33 | 1.35 |
| 4) | Maximum Torque Motor | Kgf-m | 1250 | 1250 | 1850 | 2616 | 3480 | 41970 |
| 5) | Ground Pressure | KG/cm2 | 0.178 | 0.102 | 0.16 | 0.17 | 0.19 | 0.12 |
| 6) | Travel Speed (HI) | KM/h | 4.2 | 4.2 | 4.2 | 3.6 | 3.2 | 3 |
| | (LO) | KM/h | 2.2 | 2.2 | 2.3 | 2.3 | 1.8 | 1.8 |
| 7) | Maximum Gradient | Deg | 30 | 30 | 30 | 30 | 30 | 35 |
| Work Equipment | | | | | | | | |
| 8) | Boom Length | mm | 3850 | 3700 | 7250 | 7900 | 10200 | 10600 |
| 9) | Arm Length | mm | 2000 | 2180 | 5125 | 5450 | 7450 | 5000 |
| 10) | Bucket Capacity | m3 | 0.12 | 0.35 | 0.40 | 0.5 | 0.7 | 1.4 |
| Working Range | | | | | | | | |
| A) | A. Max Digging Height | mm | 8130 | 8505 | 13850 | 15120 | 17125 | 15190 |
| | B. Max Dumping Height | mm | 6430 | 6455 | 12450 | 13260 | 15800 | 12450 |
| | C. Max Digging Depth | mm | 3895 | 3685 | 7800 | 7630 | 10325 | 11060 |
| | D. Max Digging Reach | mm | 7450 | 6810 | 12500 | 14000 | 16000 | 17000 |
| | E. Max Digging Reach on Ground | mm | 7085 | 6438 | 12280 | 13700 | 15725 | 4680 |
| Dimensions | | | | | | | | |
| B) | F. Track Gauge (F,R) | mm | 1970 | 1970 | 2760 | 2760 | 3800 | 4680 |
| | G. Track Gauge (F,E) | mm | 2790 | 2790 | 4020 | 4020 | 4400 | 4680 |
| | H. Track Length | mm | 6583 | 7788 | 9210 | 9520 | 10670 | 10640 |
| | I. Distance Between Idler | mm | 5791 | 6911 | 8433 | 8788 | 9802 | 9780 |
| | J. Track Length On Hard Ground | mm | 3367 | 4275 | 5709 | 5700 | 6650 | 7100 |
| | K. Track Length On Soft Ground | mm | 5810 | 6825 | 8000 | 7735 | 8310 | 10145 |
| | L. Width Track Shoe | mm | 1040 | 1140 | 1590 | 1590 | 1775 | 2000 |
| | M. Width Float | mm | 1070 | 1170 | 1620 | 1620 | 1807 | 2025 |
| | N. Distance Between Pontoon (F,R) | mm | 900 | 900 | 1170 | 1170 | 2030 | 2680 |
| | O. Distance Between Pontoon (F,E) | mm | 1720 | 1720 | 2440 | 2440 | 2630 | 2680 |
| | P. Overall Machine Width (F,R) | mm | 3040 | 3500 | 4660 | 4660 | 5900 | 7200 |
| | Q. Overall Machine Width (F,E) | mm | 4080 | 4320 | 5930 | 5390 | 6500 | 7200 |
| | R. Overall Machine Height | mm | 3520 | 3480 | 3685 | 4140 | 4310 | 4390 |
| | S. Ground Clearance (Co.Weight) | mm | 1598 | 1645 | 1755 | 2120 | 2380 | 2460 |
| | T. Min. Ground Clearance | mm | 990 | 990 | 910 | 1250 | 1610 | 1640 |
| | U. Shoe Setting Height | mm | 1548 | 1550 | 1610 | 1920 | 2295 | 2265 |
| | V. Crawler Height | mm | 1580 | 1580 | 1700 | 2036 | 2320 | 2355 |
| | W. Water Line Height | mm | 1130 | 1150 | 1060 | 1395 | 1880 | 1530 |
| | X. Min Swing Radius | mm | 1430 | 1576 | 2330 | 2750 | 3080 | 7380 |
| | Y. Overall Length | mm | 7010 | 7100 | 11000 | 13400 | 15500 | 16300 |
| Z. Height of Boom | mm | 1800 | 2700 | 3800 | 4130 | 4150 | 4260 | |

*Dimension are for references only, it might be different and depend on the brands or model of the excavator

**Specification are subject to change without prior noticed

Rock Bucket / GP Bucket



Uni Asia Heavy Equipment provide a diverse range and type of buckets are applicable for many kinds of excavator models. Regardless of heavy duty, severe duty, general purpose bucket, ditching bucket, skeleton bucket, rock bucket, etc. You can count on us to deliver a quality bucket for your applications, not restricted to construction, utility, material handling, recycling, dredging, forestry, or demolition applications.

HD Grapple

Excavator Heavy Duty Grapples 2 x 3 fingers are ideal for material handling. They handle large loads for maximum loading efficiency, and can be used with pin grabber couplers. Use the same grapple for coupler and non-coupler equipped machines.



www.uniasia.co

www.uniasigroup.com.my

EZ Dredging Pumps



OVERVIEW



CHARACTERISTICS

| | Ez Pumps 100 | Ez Pumps 150 | Ez Pumps 200 | Ez Pumps 250 | Ez Pumps 300 | Ez Pumps 400 |
|----------------------|------------------------|------------------------|------------------------|-------------------------|-------------------------|-------------------------|
| Mixture capacity max | 300 m ³ / h | 500 m ³ / h | 800 m ³ / h | 1250 m ³ / h | 1800 m ³ / h | 3150 m ³ / h |
| Pumps speed approx. | 1350 rpm | 1300 rpm | 1200 rpm | 900 rpm | 750 rpm | 600 rpm |
| Max power at shaft | 30 kW | 75 kW | 110 kW | 190 kW | 300 kW | 500 kW |
| Suction bore | 100 mm | 150 mm | 200 mm | 250 mm | 300 mm | 400 mm |
| Discharge piping | 100 mm | 150 mm | 200 mm | 250 mm | 300 mm | 400 mm |
| Spherical Passage | 50 mm | 75 mm | 125 mm | 130 mm | 155 mm | 210 mm |
| Weight (hydraulic) | 850 kg | 1075 kg | 1500 kg | 2600 kg | 3400 kg | 5000 kg |
| Weight (electric) | 1300 kg | 1600 kg | 2200 kg | 3500 kg | 4500 kg | 6400 kg |
| Hydraulic Pressure | 250 bar | 250 bar | 250 bar | 250 bar | 300 bar | 300 bar |
| Hydraulic Flow | 85 L/min | 195 L/min | 290 L/min | 425 L/min | 600 L/min | 1000 L/min |
| Hydraulic Cutterflow | 15-20 L/min | 15-20 L/min | 35-50 L/min | 35-50 L/min | 70-110 L/min | 70-110 L/min |

Shallow water Dredging Equipment

Uni Asia sectional barge can be easily mobilized / transported by trucks. This has helped customers on the inland rivers & lakes dredging project.

We design and manufacture sectional barge according to customer requirement.

Benefits of Uni Asia sectional barge:

- 1) Modular & interlocking with additional sectional barge.
- 2) Designed to be containerized & truckable.
- 3) Costumed make according to customer requirement.

Application:

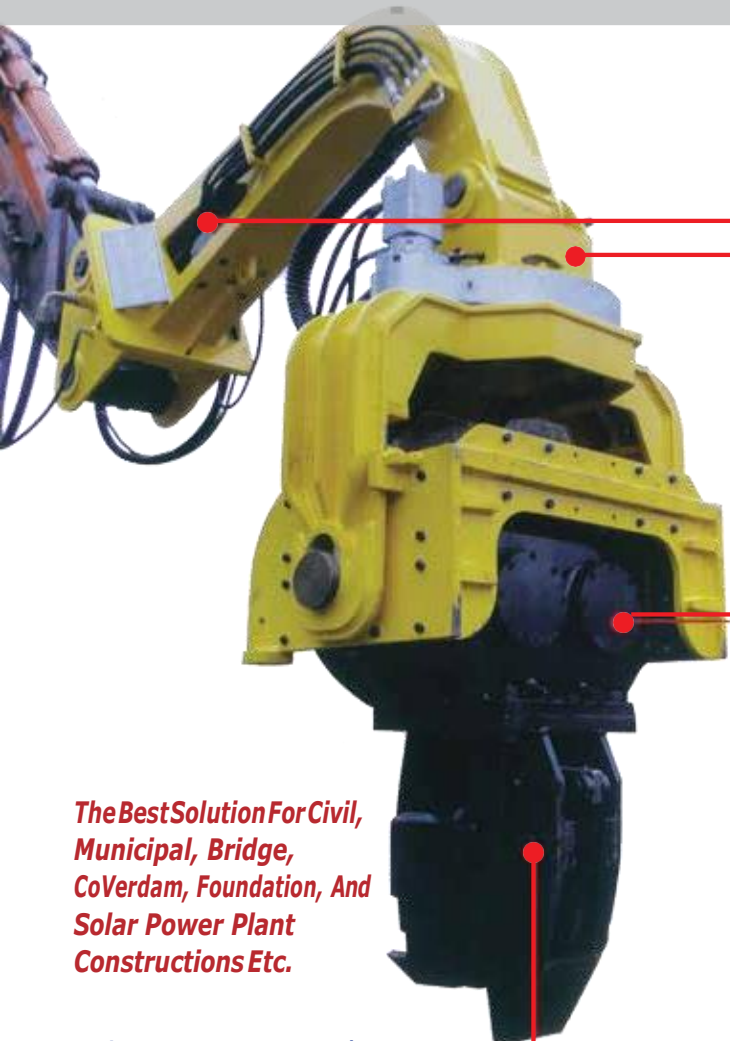
- 1) Storage Barge Transporter for shallow water dredging (Lake, reservoir & inland river)
- 2) Floating platform.
- 3) Excavators, cranes & bridge construction machinery working platform



www.uniasia.co

www.uniasiaigroup.com.my

Vibro Hammer



The Best Solution For Civil, Municipal, Bridge, CoVerdam, Foundation, And Solar Power Plant Constructions Etc.

- Less environmental impact
- High productivity & efficiency
- Easy operation & maintenance



Hydraulic Control System

Special designed for JOLT s vibratory hammers.



Hydraulic Valve Block

Waterproof solenoid and adapter.



High Pressure Washable Hydraulic Oil Filter



Swivel System

360 ° full return swivel structure, IP66 waterproof and dustproof, very stable and reliable



Hydraulic Motor



High Quality Hydraulic Motor From France



Balances The Air Pressure And Heat In Gear Box.



Clamp

Cast steel body



Electronic Control System

High quality water proof connectors and special designed control box.



High Quality Joystick With Three Functions Control:

Swivel, Clamp And Vibration.

Standard Undercarriage



Heavy Duty Lubricants



Others



Hydraulic Pulverizer



Hydraulic Earth Drill



Mechanical Pulverizer



Hydraulic Shears



Quick Hitch



Hydraulic Ripper



Hydraulic Grab



Hydraulic Grapple



Hydraulic Compactor



UNI ASIA HEAVY EQUIPMENT

COMPANY REG NO. JM0747167-X



+6017-707 3770 (Vincent Soh)



sales@uniasia.co



www.uniasia.co
www.uniasigroup.com.my

Factory Amphibious Undercarriage : Kawasan Perindustrian Tebrau 3, PLO 229, Jln Kencana Mas 2, Taman Mount Austin, 81100 Johor Bahru, Johor, Malaysia.

Factory Attachments : No. 664, Jalan Idaman 3/4, Taman Perindustrian Senai, 81400 Senai, Johor, Malaysia.